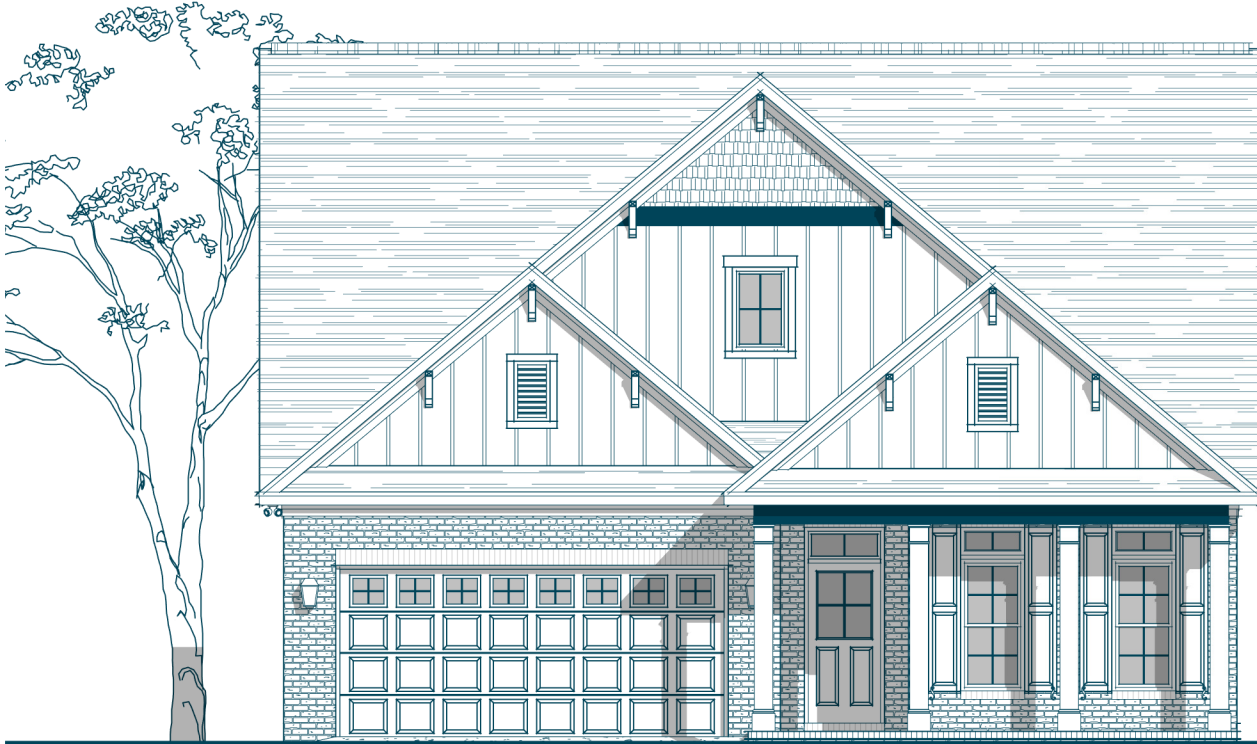


BRANCH CLASSIC



Specs:

Bedrooms: 3
Bathrooms: 2-3
Square Footage: 1,846 Sq.Ft.
First Level: 1,846 Sq.Ft.
Width: 39'-8"
Depth: 74'-4"

Options Shown:

- 1 Screened in Porch
- 2 Sunroom (Adds 151 Sq. Ft.)
- 3 3'-0" Wider Garage w/ Two Doors
- 4 2'-0" Garage Extension
- 5 Second Floor (Adds 395 Sq. Ft.)
- 6 Second Floor Bath
- 7 Drop Zone Built-in
- 8 Owners Luxury Bath
- 9 Laundry Cabinet with Sink
- 10 Greatroom Built-in

1/10/2018 4:44:13 PM

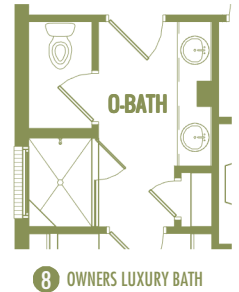
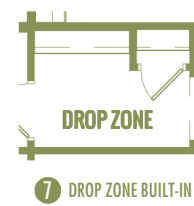
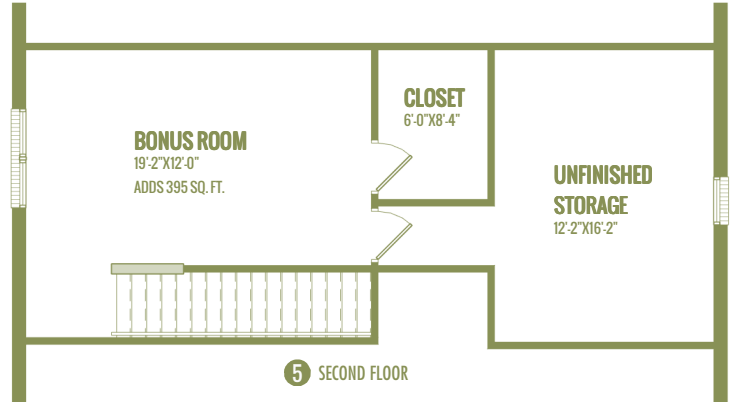
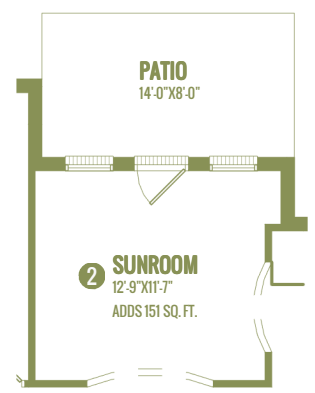
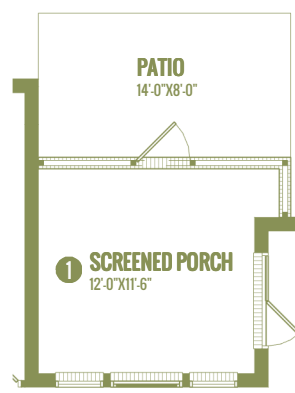
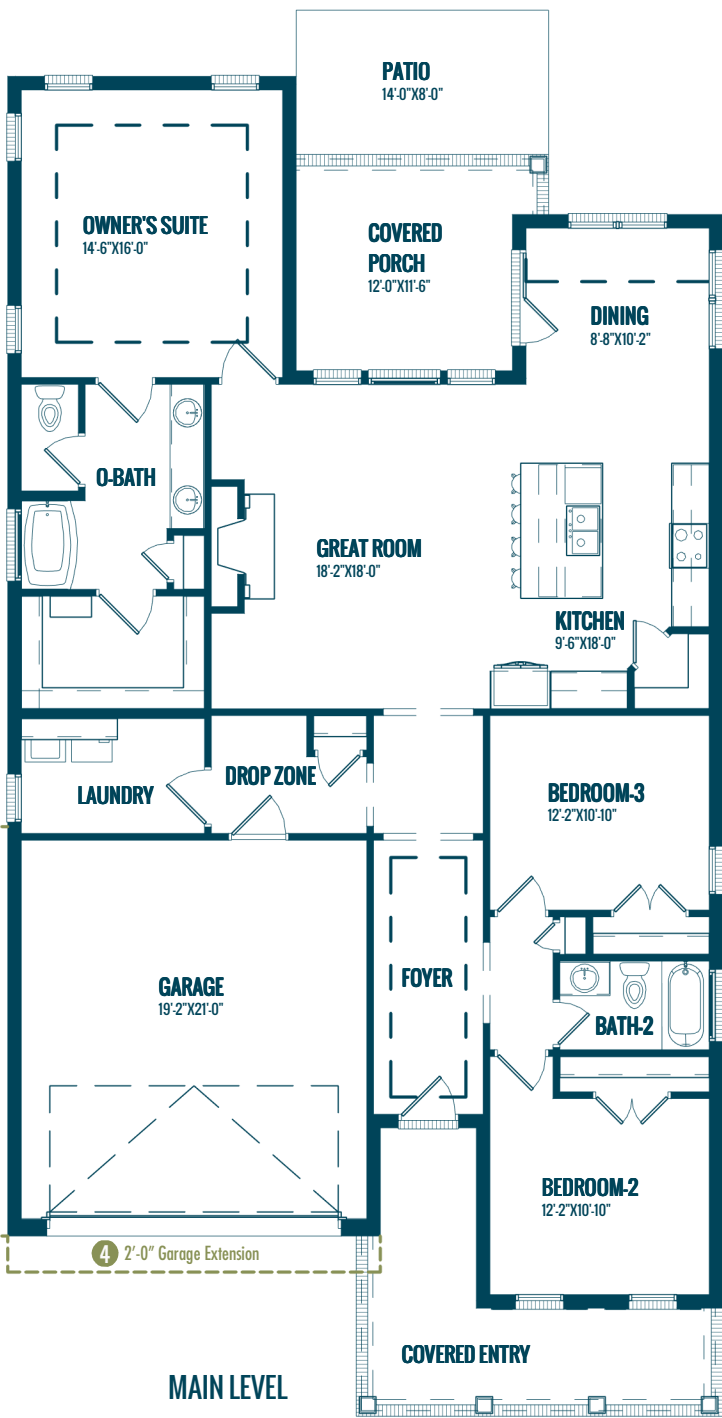


Watercolors, illustrations, and floor plans shown are for marketing purposes only and are subject to change at builder's discretion. Square footage is outside veneer and should be independently verified. This is not a legal document.

3411 HEALY DRIVE, SUITE A, WINSTON-SALEM, NC 27103
4330 SOUTHPORT SUPPLY ROAD, SUITE 101, SOUTHPORT, NC 28461

336.659.8211
910.363.1620

ISENHOURHOMES.COM



BRANCH CLASSIC

3411 HEALY DRIVE, SUITE A, WINSTON-SALEM, NC 27103
4330 SOUTHPORT SUPPLY ROAD, SUITE 101, SOUTHPORT, NC 28461

336.659.8211
910.363.1620

ISENHOURHOMES.COM

1/10/2018 4:44:53 PM